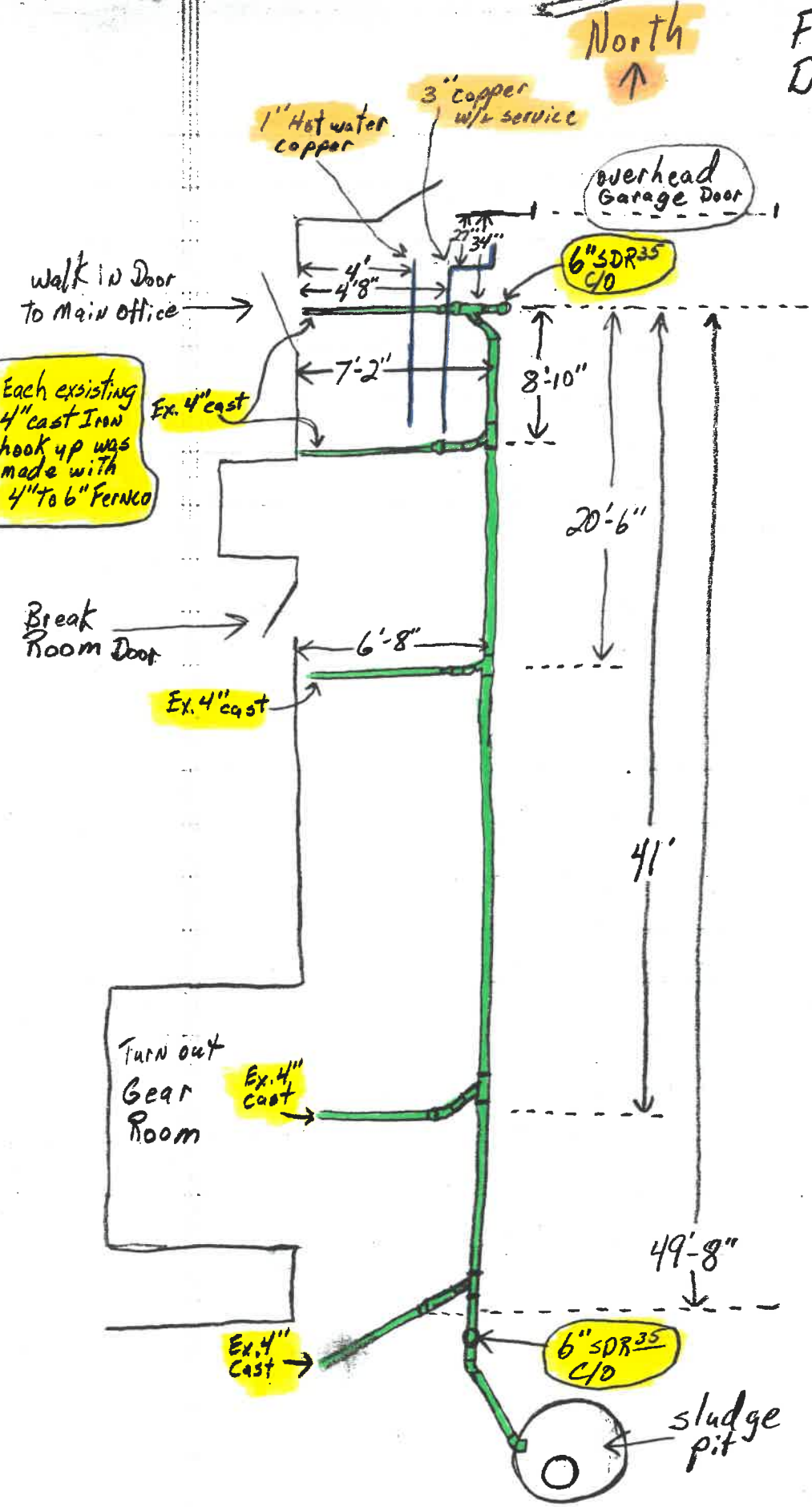


Fire Station Drainage Replacement 2-20-01

North
↑



Walk in Door to Main Office

Each existing 4" cast Iron hook up was made with 4" to 6" Fernco

Break Room Door

Turn out Gear Room

6" SDR35 C/O

6" SDR35 C/O

Overhead Garage Door

sludge pit

Ex. 4" cast

Ex. 4" cast

Ex. 4" cast

Ex. 4" cast

1" Hot water copper

3" copper w/ service

4'8"

7'2"

6'8"

8'10"

20'6"

41'

49'8"